

Monster Back Light 2"x2" Series



ELECTRICAL:

Input Voltage: See LDM350/2 spec
 Input Current: See LDM350/2 spec
 Connector: Quick Connect, 5 pin Reverse Key Euro / Micro

WARNING !!!

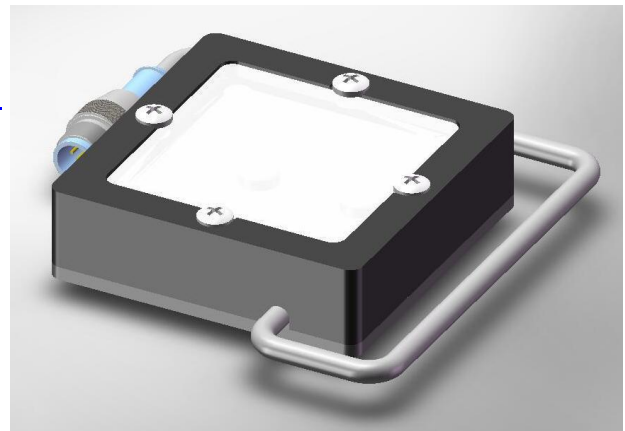
**Use Only Spectrum Illumination LDM Driver with Monster Lights.
 Do Not Connect Monster Lights Directly to 24VDC!**

MECHANICAL:

Driver: DIN Rail Mount
 Dimensions: <http://www.spectrumillumination.com>

ILLUMINATION:

Light Source: LED – 4 Colors
 Quantity HB LED's: 4
 Light Emitting Pattern: 2" x 2" / 50mm x 50mm
 LED Life: up to 50,000 hours*.
 *Contact us for LED life information



DIFFUSERS:

Polarizer – Option /P

PART NUMBER DESIGNATION:

MBL22-XXX
 XXX = Light Color -470, -530, -630 & -WHI



Light includes LDM DIN rail mount constant current driver, 4-meter cable (driver is available with variable or 0-10VDC intensity control - cable also available in 8, 15 and 30-meter lengths).

Color	Dash #	λ Dominant Typical	λ Dominant Range	Spectral Half-width $\Delta\lambda_{1/2}$	λ Peak Typical	Units
Red	-630	625	620 - 632	18	632	nm
Green	-530	528	513 - 537	33	520	nm
Blue	-470	470	464 - 476	25	465	nm
White	-WHI	Color Temp 5600K typical				